



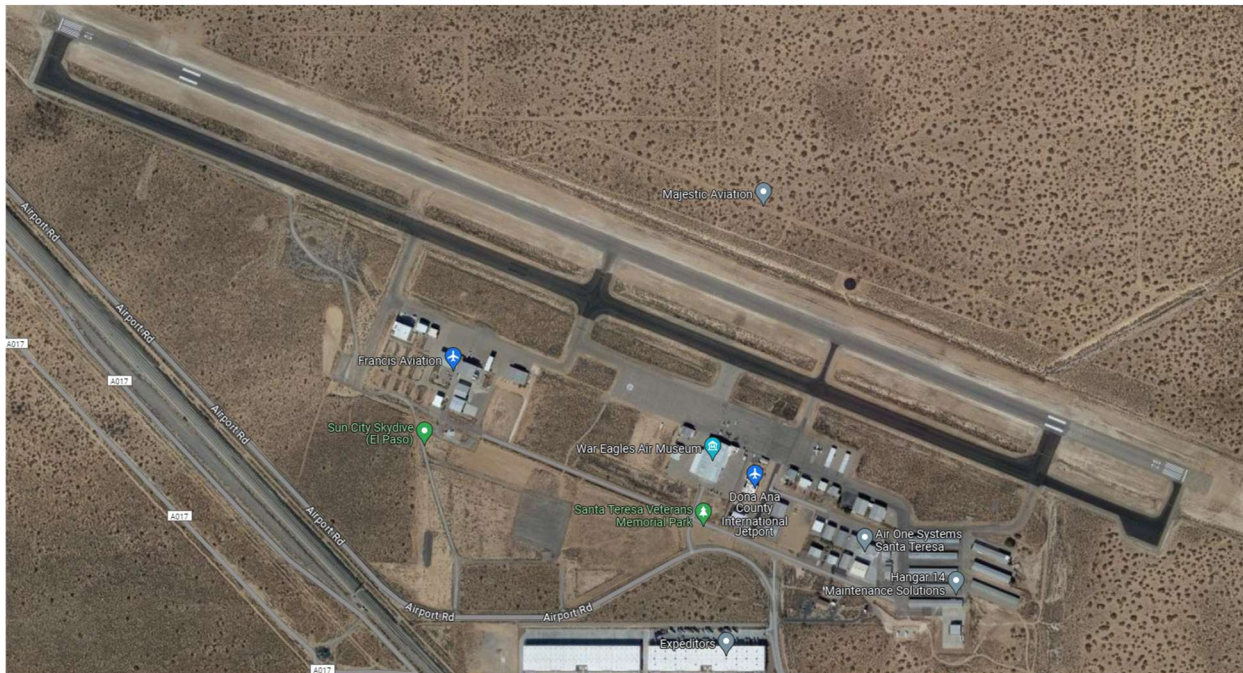
# Doña Ana County

## NEW MEXICO

## Dona Ana County International Jetport

The Dona Ana County International Jetport is a general aviation airport serving Santa Teresa, Sunland Park, and southern Dona Ana County, New Mexico as well as western portions of El Paso, Texas. It is located four miles northwest of Santa Teresa and about 13 miles northwest of El Paso. It is the base for about 130 light aircraft and is the home to the War Eagles Air Museum.

The airport was opened in 1983 as the Santa Teresa Airport with a single runway of 5400 ft. length. The runway was extended to 8500 feet in 1989 and the airport was renamed to Santa Teresa Dona Ana County in 1996. The airport was later renamed again to Dona Ana County at Santa Teresa and to the current Dona Ana County International Jetport by 2018. At that time the code was changed from 5T6 to DNA. The runway was further lengthened to the current 9550 feet in the early 2010's and rebuilt in 2020 to accommodate larger jets the size of a Boeing 737. There has not been any type of scheduled commercial or air freight service however the airport is actively expanding and pursuing air freight service along with planning to build a second runway of 12,000 ft length.



Aerial view of the Dona Ana County International Jetport.



Photos of the War Eagles Air Museum at the Dona Ana County International Jetport.