

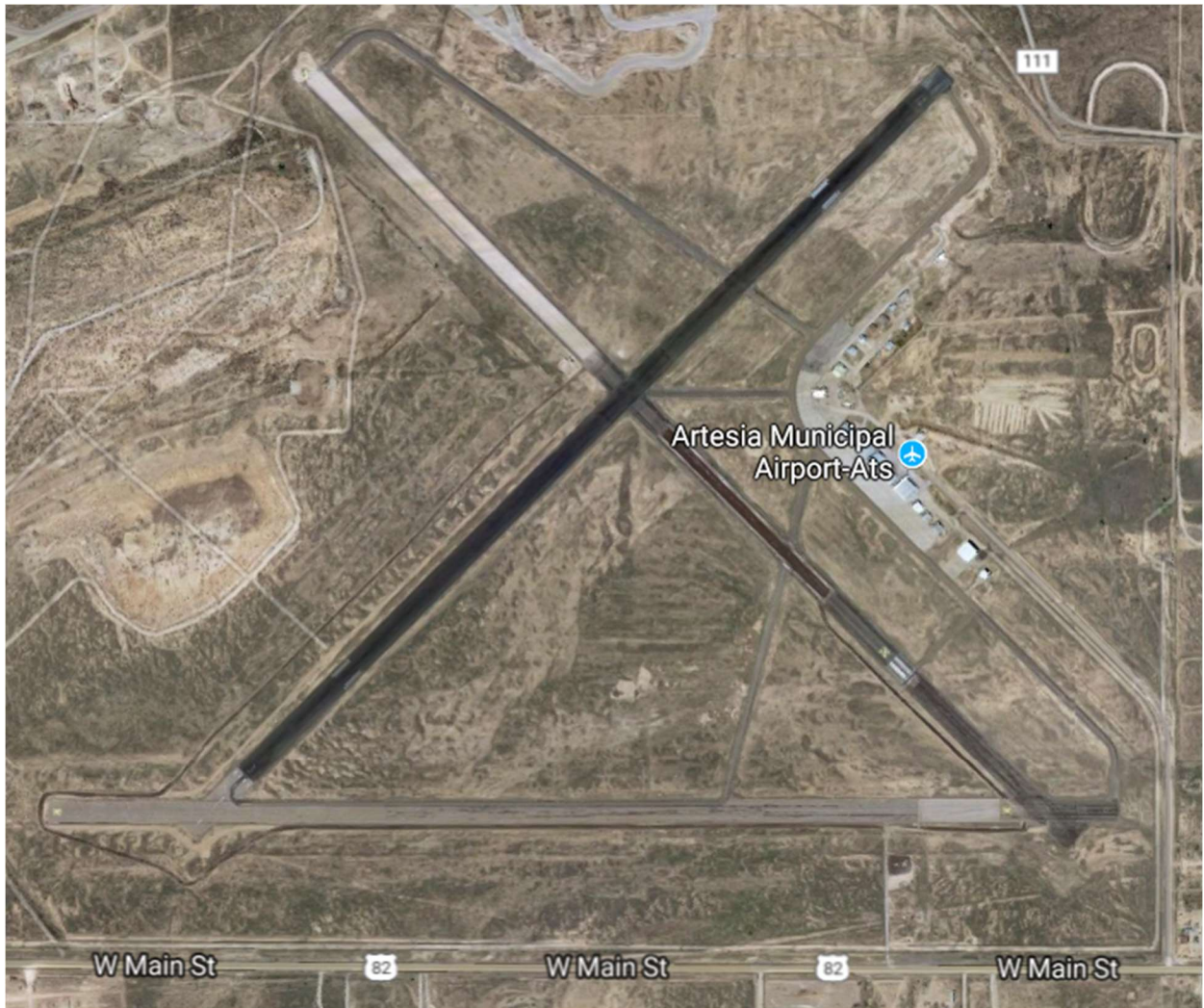


Artesia Municipal Airport

The Artesia Municipal Airport is now a general aviation civil airfield with two runways located three miles west of Artesia, New Mexico. It was established in 1943 by the United States Army Air Forces as a contract glider training field to train glider pilot students during World War II. The field was deactivated in the fall of 1944, declared surplus, and turned over to the Army Corps of Engineers. It was later discharged to the War Assets Administration and eventually converted into a civil use airport. The Artesia airport saw commuter airline service by several commuter air carriers from 1963 through 1978. Scheduled flights were provided to Albuquerque, El Paso, Amarillo, Lubbock and Midland/Odessa. A third runway had initially been constructed but was deactivated in the late 1980's.



The terminal building at the Artesia Municipal Airport.



An aerial view of the Artesia airport. The runway that was closed was an east-west runway and can still be seen along the lower part of the photo.